



**TEE Critical Care
International Group**

TEE Masterclass program

**DECEMBER
2nd to 6th**

AMIENS/PARIS

**THANK
YOU**

CAE

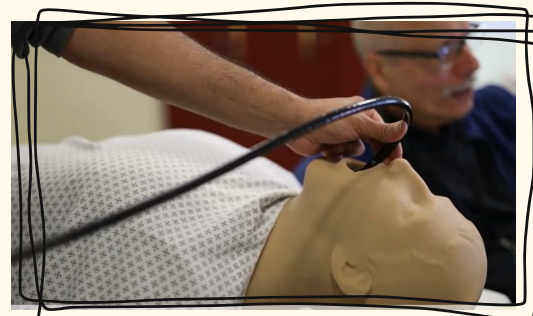
 **GE HealthCare**

 **AOP** GLOBAL
HEALTH

PHILIPS



**TEE Critical Care
International Group**



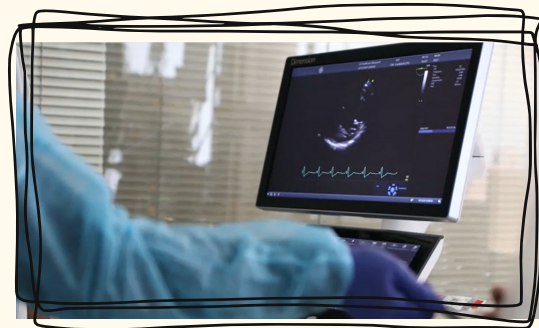
COURSE DIRECTORS :

Michel SLAMA,
Antoine VIEILLARD-BARON
Paul MAYO

SPECIAL GUEST :
Scott HAMILTON

SPEAKERS :

Florence BOISSIER,
Konstantin YASTREBOV,
Julien MAIZEL,
Yoann ZERBIB,
Cyril CHARRON,
Clément BRAULT,
Ashraf ALTAYAR,
Yohann BOHBOT,
Philippe VIGNON



DAY 5 - FRIDAY DECEMBER, 6TH

Venue : Hôpital Ambroise-Paré - Boulogne Billancourt

9.00-9.45 AM
ARDS (AVB) chair MS

10.00-11.00 AM
group 1: Quizz buzzer (MS, PM).
group 2: TEE hands-on (AVB, CC)
group 3: conference (pulmonary embolism (SM), Myocardial infarction (SM) Chair KY

11.05-11.30 AM - break 

11.30 AM-12.30 PM
group 2: Quizz buzzer (MS, PM)
group 3: TEE hands-on (AVB, CC, PM)
group 1: conference (pulmonary embolism (SM), Myocardial infarction (SM) Chair KY

12h30-1h30 PM - lunch 

1h30-2h30 PM
group 3: Quizz buzzer (MS, PM).
group 1: TEE hands-on (AVB, CC, PM)
group 2: conference (pulmonary embolism (SM), Myocardial infarction (SM) Chair KY

2h45-4.00 PM
TEE lung, pleura, abdomen (PM). TEE aortic pathologies (PM)

4.00-4.30 PM
discussion evaluation debriefing end of the master class.

Diploma.



AVB Antoine Vieillard Baron, CC Cyril Charron, PM Paul Mayo,
MS Michel Slama, JM Julien Maizel, YB Yohann Bohbot,
CB Clément Brault, YZ Yoann Zerbib, FB Florence Boissier,
AA Ashraf Al Tayar, KY Konstantin Yastrebov, PV Philippe Vignon

DAY 4 - THURSDAY DECEMBER, 5TH

Venue : Hôpital Ambroise-Paré - Boulogne Billancourt

8.45-9.15 AM

welcome to Paris (Course directors) and conference TEE artefacts and pitfalls Ph Vignon (Limoges) Chair MS

9.15-10.15 AM

group 1: TEE Pictionary (SM, PM)

group 2: TEE hands-on (AVB, CC)

group 3: conference ECMO (KY), Heart Lung interaction (MS)

10.15-10.45 AM Coffee Break



10.45-11.45 AM

group 2: TEE Pictionary (SM, PM)

group 3: TEE hands-on (AVB, CC)

group 1: conference ECMO (KY), Heart Lung interaction (MS)

12.15 PM-2.00 PM lunch Brasserie Bohême



2.15-3.15 PM

group 3: TEE Pictionary (SM, PM)

group 1: TEE hands-on (AVB, CC)

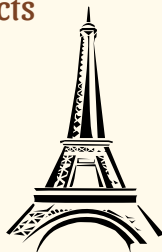
group 2: conference ECMO (KY), Heart Lung interaction (MS)

3.15-4.00 PM typical short cases (CC) Chair PM

4.15 PM End of the day

7.30 pm : Departure to the seine boat

9.15 pm : Dinner on Seine Boat



DAY 1 - MONDAY DECEMBER, 2TH

Venue : Simusanté - CHU Amiens Picardie

9.00 AM

Welcome Directors of the course, organization, practical aspects.

9.30 AM

conference : TEE Planes (AVB)-10.30: TEE demonstration on simulator (PM)

10.30-11.00 AM:

conference : main indications, contra-indications, complications, practical aspects of TEE in the ICU (JM)

11.00-11.15 AM: coffee break



11.15 AM-12.15 PM:

group 1: interactive cases (2 ICU cases) (MS, YZ, KY)

group 2: simulation (SM, CB, CC, PM)

group 3: 2 conferences of 20 mn (left ventricular dysfunction in different clinical situation in the ICU/Which Parameters and interpretation with TEE (AVB), TEE parameters of fluid-responsiveness (AVB)) moderator JM

12.15-1.15PM: lunch and TEE simulator free access



1.15-2.15 PM :

group 2: interactive cases (MS, SM, KY)

group 3: simulation (PM, CB, CC, YZ)

group 1: 2 conferences of 20 mn (left ventricular dysfunction (AVB), fluid-responsiveness AVB) Moderator JM

2.20-3.20 PM :

group 3: interactive cases (PM, MS, KY)

group 1: simulation (YZ, SM, CB, CC)

group 2: 2 conferences of 20 mn (left ventricular dysfunction (AVB), fluid-responsiveness (AVB) moderator JM)

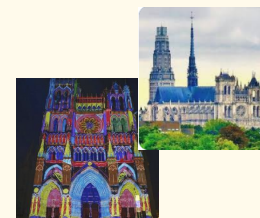
3.20-3.45 PM break

3.45-4.30 PM conference cardiac dysfunction in septic shock (MS) (Moderator SM)

4.30-4.45 PM Debriefing end of day 1

7.00 PM Cathedral

8.00 PM Mercure Aperitif and Buffet



DAY 2 - TUESDAY DECEMBER, 3TH

Venue : Simusanté - CHU Amiens Picardie

8.30-9.15 AM: conference Florence Boissier (Poitiers): TEE assessment of RV function moderator MS

9.30-10.30 AM:

group 1: interactive cases (JM, PM,CC)

group 2: TEE hands-on (MS, AVB, CB,YZ,SM)

group 3: conference (valvular anatomy and stenosis (YB)) chair KY

10.45-11.00 AM Coffee break 

11.15-12.15 AM:

group 2: interactive cases (JM, PM,CC)

group 3: TEE hands-on (MS, AVB, CB, YZ,KY)

group 1: conference (valvular anatomy and stenosis (YB) chair SM)

12.30PM-1.30 PM Lunch and TEE simulator free access 

1.45-2.45 PM:

group 3: interactive cases (JM, PM,CC)

group 1: TEE hands-on (MS, CB,YZ, AVB, KY)

group 2: conference (valvular anatomy and stenosis (YB) chair SM)

3.00-3.45 PM

GE/Philips/AOP innovations (15 mn each)

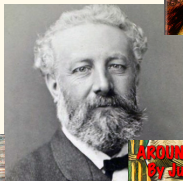
3.45-4.15 PM coffee break 

4.15-4.45 PM

TEE in cardiac emergency SM chair KY

4.45-5.00 PM debriefing

7.00 PM Diner (Maison Jules Verne)



DAY 3 - WEDNESDAY DECEMBER, 4TH

Venue : Simusanté - CHU Amiens Picardie

8.30-9.00 AM:


Conference Ashraf Al Tayar (Damman, Saudi Arabia) TEE in the Middle-East: development of a training program and practical aspects chair PM

9.15-10.15 AM:

group 1: interactive cases (JM, PM,KY)

group 2: TEE hands-on (MS, AVB, CB, YZ)

group 3: conference TEE valvular regurgitations assessment (YB) Chair SM

10.30-10.45 AM - Coffee break 

11.00 AM -12.00 PM:

group 2: interactive cases (JM, PM,KY)

group 3: TEE hands-on (MS, CB,YZ, FT YZ cardiac surgery)


group 1: conference YB TEE valvular regurgitations assessment (YB) Chair SM

12-15 PM-1.15 PM:

group 3: interactive cases (JM, PM,SM)

group 1: TEE hands-on (MS, CB,YZ,AVB,YZ)

group 2: conference TEE valvular regurgitations assessment YB chair KY

1.15-1h45 PM - Lunch 

2.00 PM

departure to Paris



4.00 PM:

Free time (Shopping...)

6.00 PM

departure for AVB diner (Bus)

9.00 PM

return to the hotel (Bus)

